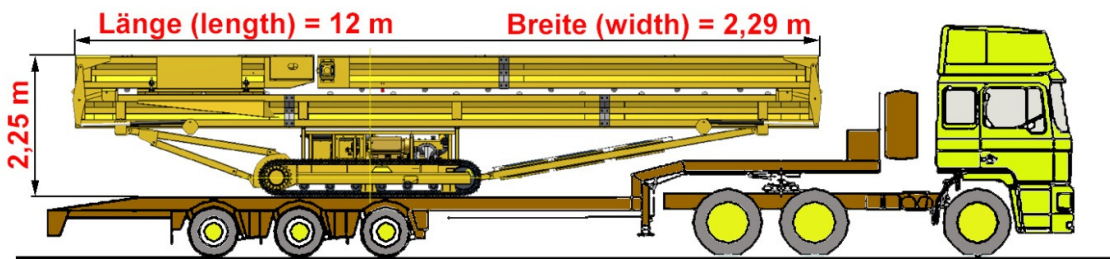


KEESTRACK STACKER 230 , track mobile stacking equipment

STACKER ON TRACKS

Transport dimensions

Height crawler / machine : 2250 mm
Width : 2290 mm
Transport length: 12000 mm
Weight: approx. 11,3 t



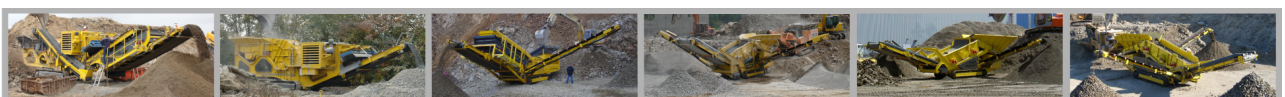
Main Conveyor

Length : 23000 mm,
Width : 1000 mm.
Speed : adjustable max. 1,3 m/sec.
Max. capacity : 400 t/h.
Drive : hydraulic 22,5 kW.
Belt: EP 400/3 4+2; flat
Troughing: 30 °; 3 parts

Feed size: 0 up to max. 200 mm

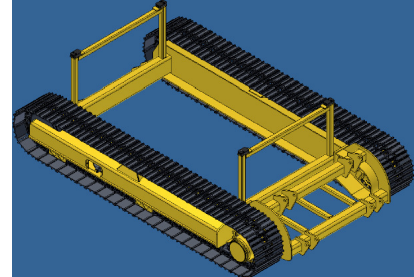
Feed capacity: depending on the inclination of the conveyor:
Inclination 16°: up to 400 T.P.H.
Inclination 18°: up to 350 T.P.H.
Inclination 22°: up to 300 T.P.H.

Stockpile capacity: depending on the swivelling of the conveyor
(estimations: angle of repose 37 °; bulk weight 1,7kg/m³):
Swivelling 0 °; Inclination 22°: 2500 tons
Swivelling 90 °; Inclination 22°: 8600 tons
Swivelling 180 °; Inclination 22°: 15000 tons



Track unit

Length : 3000 mm.
Width (total) : 2290 mm.
Width of the tracks : 400 mm.
Max speed : 1 km/h.
Pressure on floor: 0,47 kg/cm²



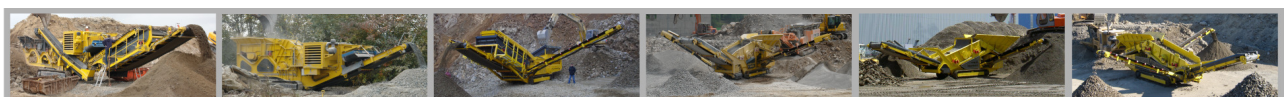
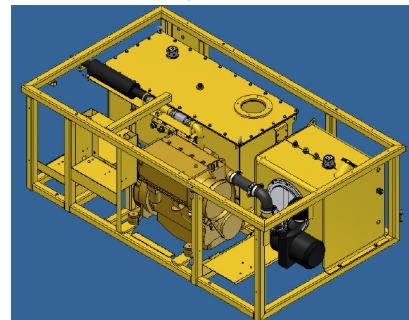
Engine unit

Model : DEUTZ D 2011 L3i ;
TIER III, EU Stage IIIA
Type : 3 cylinder in-line
Power ISO 14396 : 35,8 kW / 48,6 Horse Power
Max. torque : 137 Nm / 1700 rpm
Bore/Stroke : 94 x 112 mm
Total displacement : 2330 cm³
Fuel consumption: 225 g/kWh
Voltage : 12 Volt
Cooling: air cooled
Fuel tank: 250 litres



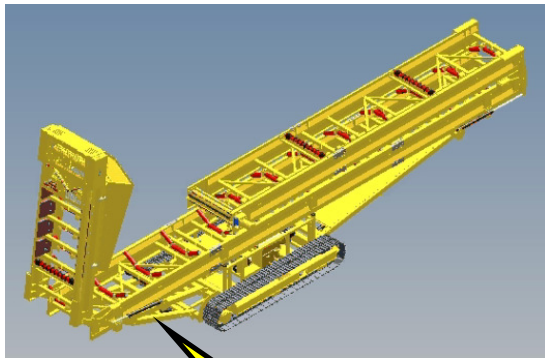
Hydraulic

Hydraulic pump : Sauer/Danfoss Type JRR 60, load-sensing
Oil tank: 400 litres



Hydraulic cylinders for :

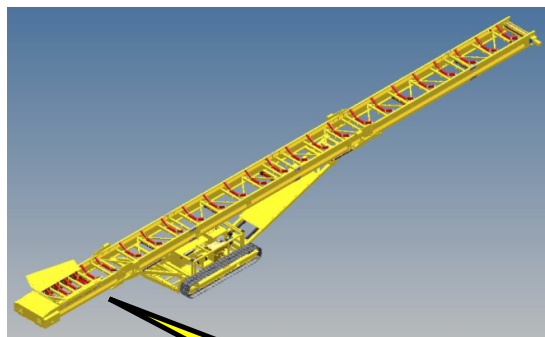
- A) folding and
- B) lifting of the conveyor (min./max. 0/22 °)



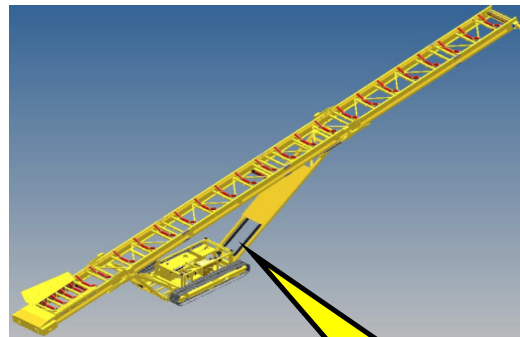
A : Folding short part of conveyor



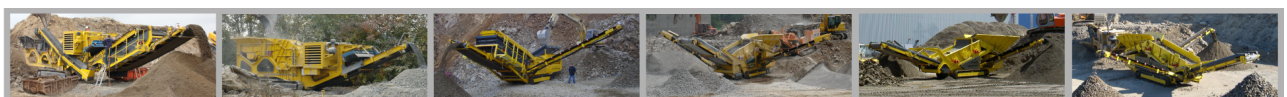
A: Folding long part of conveyor



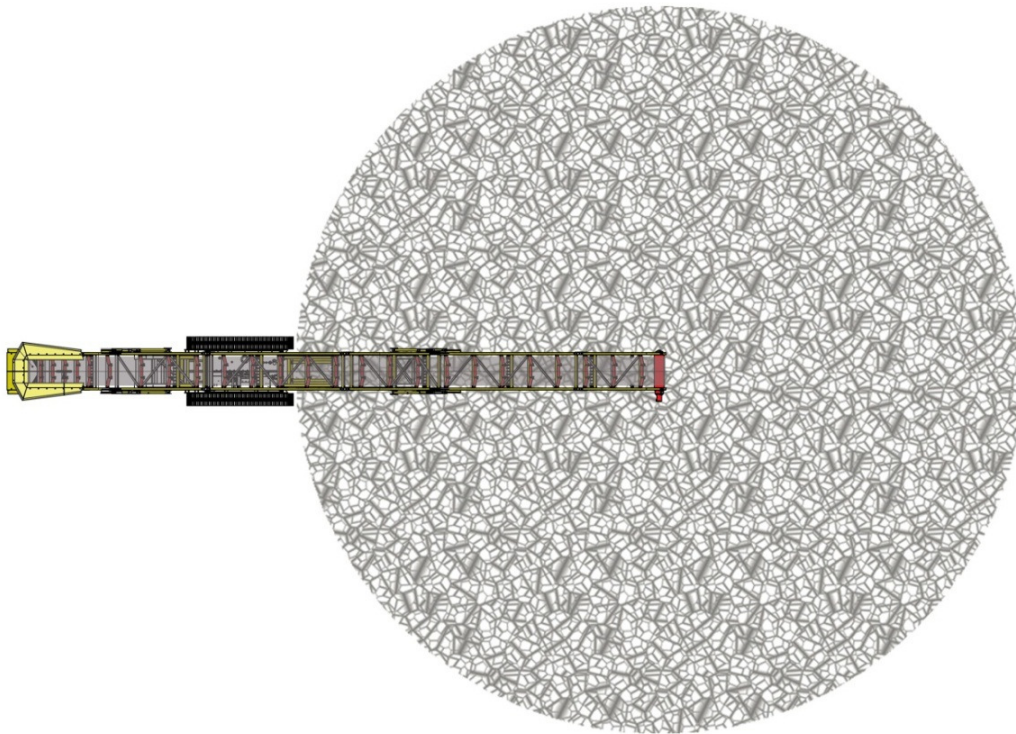
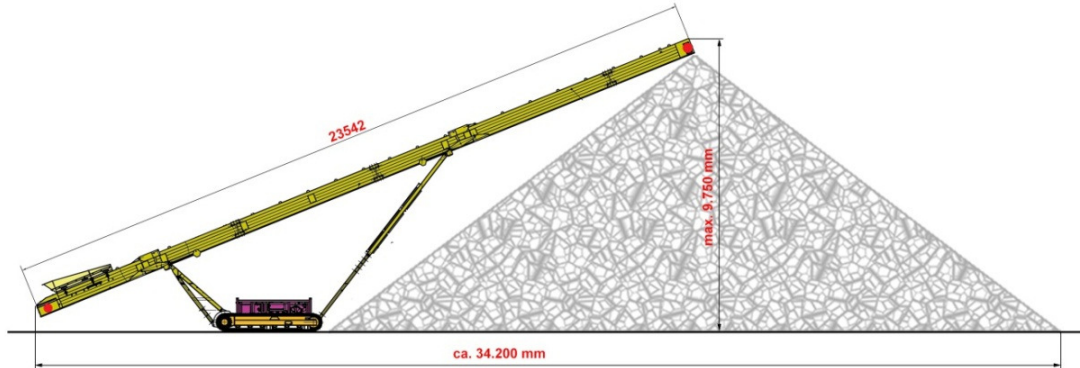
B: Lifting feed end of conveyor



B: Lifting discharge end of conveyor

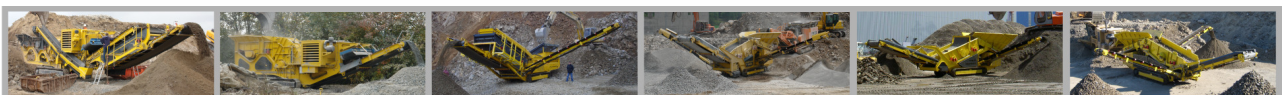


Taunusweg 2 . 3740 Bilzen . Belgium
Tel: + 32 89 51 58 51 . Fax: +32 89 51 58 50
Info@keestrack.net . www.keestrack.com



Stockpile capacity: depending on the swivelling of the conveyor
(estimations: angle of repose 37 °; bulk weight 1,7 kg/m³):

Swivelling 0 °; Inclination 22°: 2500 tons
Swivelling 90 °; Inclination 22°: 8600 tons
Swivelling 180 °; Inclination 22°: 15000 tons



MOBILE CRUSHING AND SCREENING EQUIPMENT

Surface treatment

Preparation: Sand blasted SA 2,5
Primary coat: Zinc phosphate
Cover coat: powder coated 80 µm,
yellow RAL 1004 and grey RAL 7016

Availability

From middle to end of May 2012 ,
subject to order confirmed

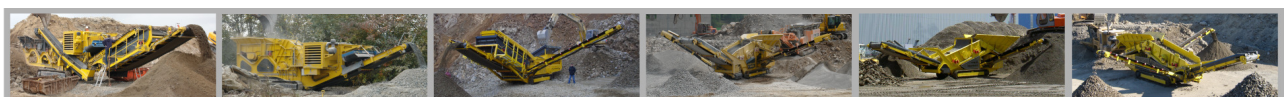
Warranty

1 year or 1500 working hours, whichever comes first.
The Keestrack General Sales, Warranty, Delivery and Payment conditions apply.
For the Diesel engine the warranty of the engine manufacturer applies.

Wear parts and wear components and consumables are withheld from warranty.
Damage from circumstances beyond the reasonable control of Keestrack, or
damage of incorrect use is also withheld from warranty.
Keestrack warranty terms and conditions apply

All Keestrack offers are subjects to change and are not binding until confirmed.

Keestrack business and trade terms and conditions always apply



MOBILE CRUSHING AND SCREENING EQUIPMENT